



Seed Treatment Technology Evaluation: Digital Evaluation Systems

Jin Zhang
Research Coordinator,
AgriThority

What is WinRHIZO?

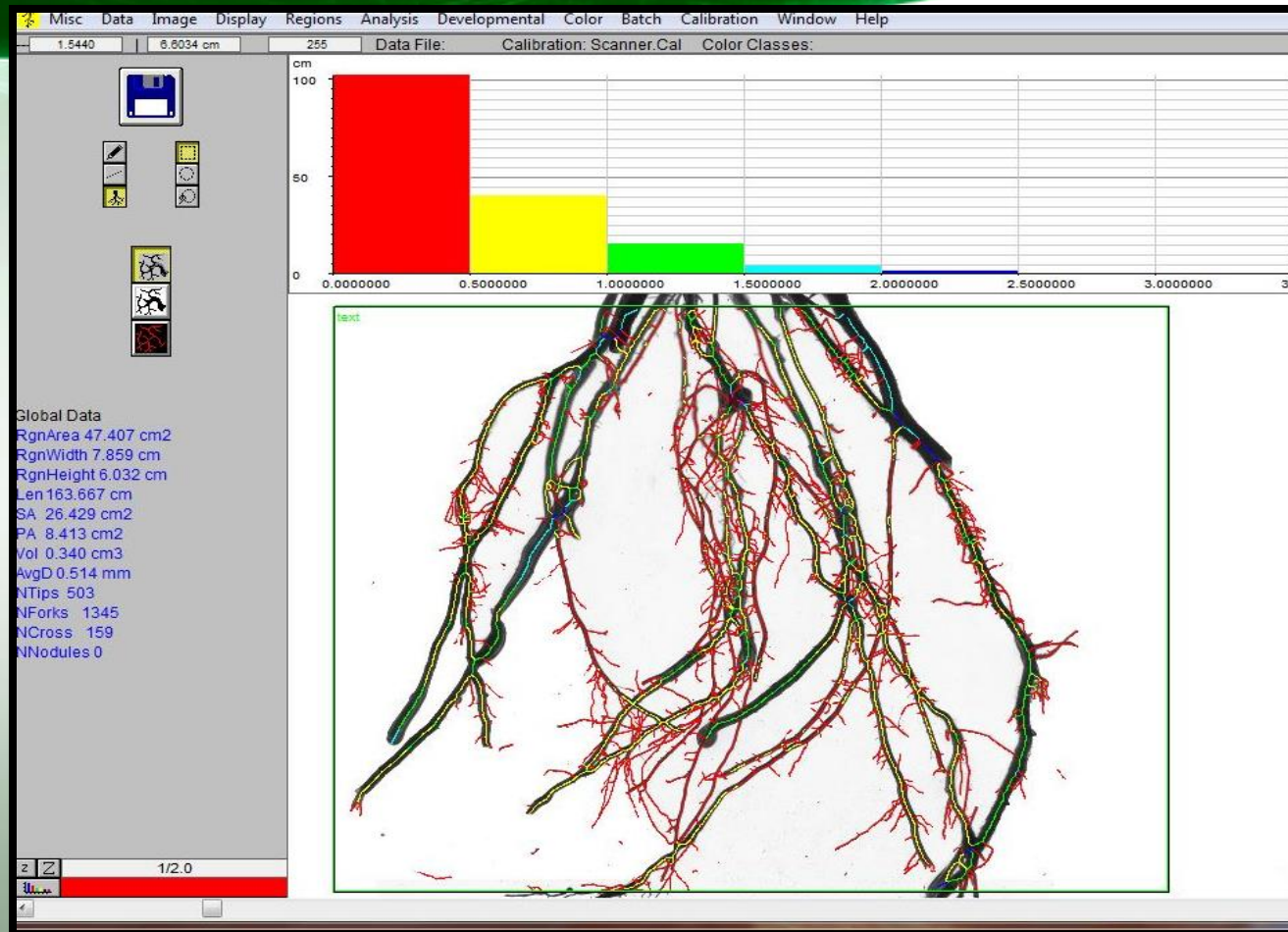
- WinRHIZO: an image analysis system specifically designed for root measurement
- morphology (length, area, volume...)
- topology
- architecture
- color analyses



WinRhizo offers early season root data such as root length and surface area for early season crop vigor evaluation



Precise Analysis & Reliable Data



What Do We Do?

- Sample
- Scan
- Analyze
- Summarize

Contract with CROs



Storage, Wash & Scan

Storage

- Ship overnight
- Alcohol spray
- Low temperature

Wash

- Water tank soak
- Hand wash

Scan

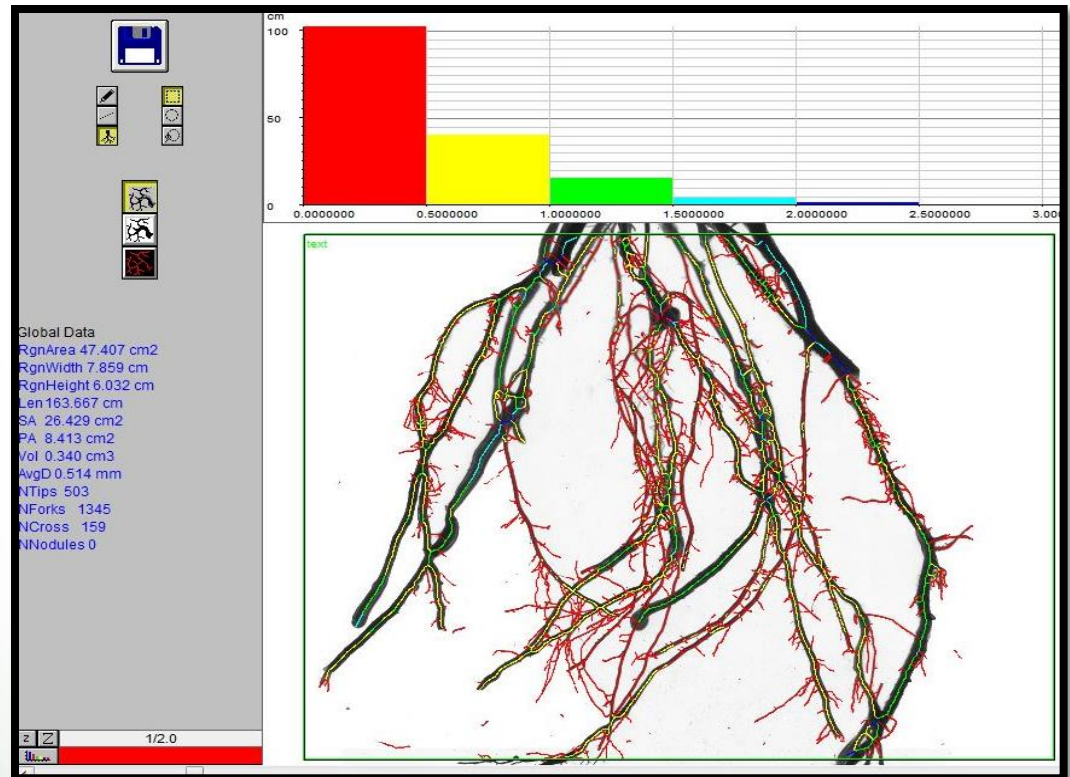
- Dual lens System
- Roots in water



Analysis

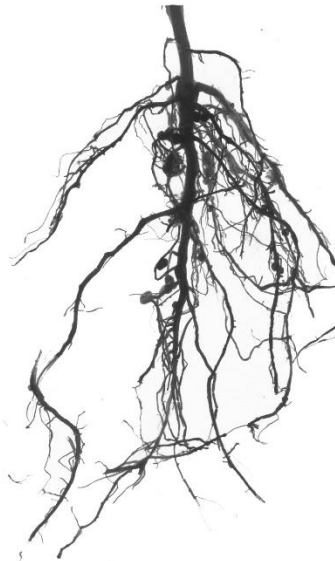
Parameters

- Length
- Surface area
- Volume
- Average diameter
- Project area
- Tips
- Forks
- Crossings



V4 Stage Soybean Roots

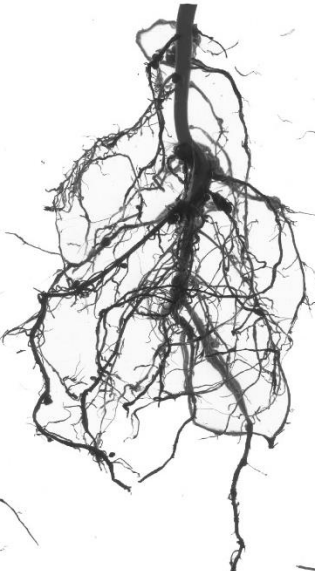
Treatment 1



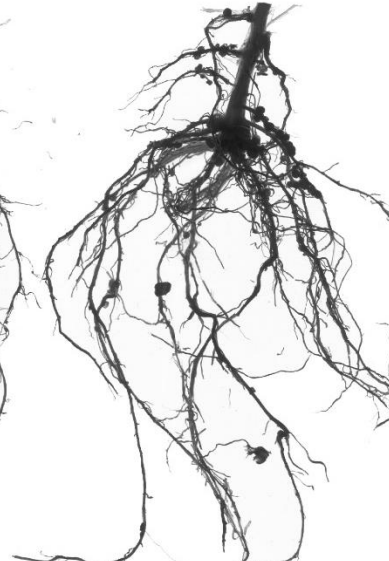
Treatment 2



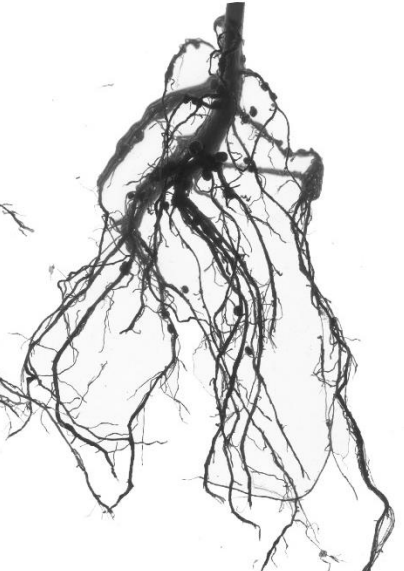
Treatment 3



Treatment 4



Treatment 5



Length (cm): 226.99

Length (cm): 212.04

Length (cm): 237.78

Length (cm): 240.01

Length (cm): 263.06

Surface Area (cm²): 47.68

Surface Area (cm²): 45.31

Surface Area (cm²): 48.82

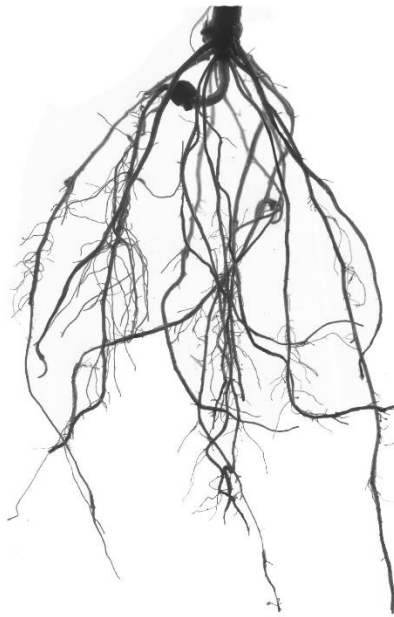
Surface Area (cm²): 48.49

Surface Area (cm²): 50.77

Location: Fister OH, Plant date: 05/XX/2013, Sampled date: 06/25/2013, Sample stage: V4-5

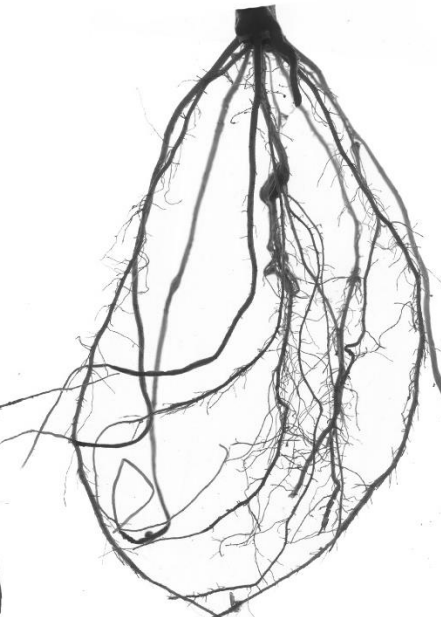
V3 Stage Corn Roots

Treatment 1



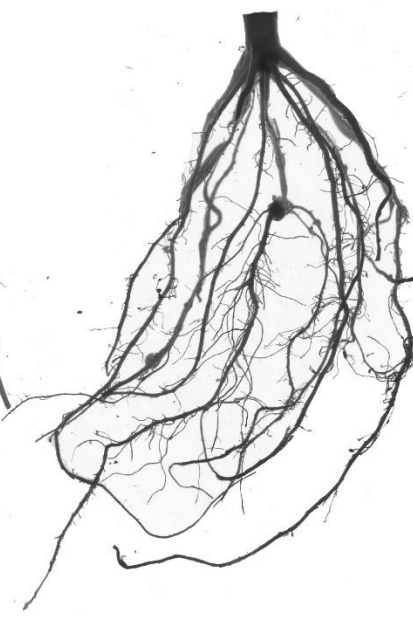
Length (cm): 243.50
Surface Area (cm²): 57.59

Treatment 2



Length (cm): 257.81
Surface Area (cm²): 59.79

Treatment 3



Length (cm): 246.86
Surface Area (cm²): 57.96

Treatment 801

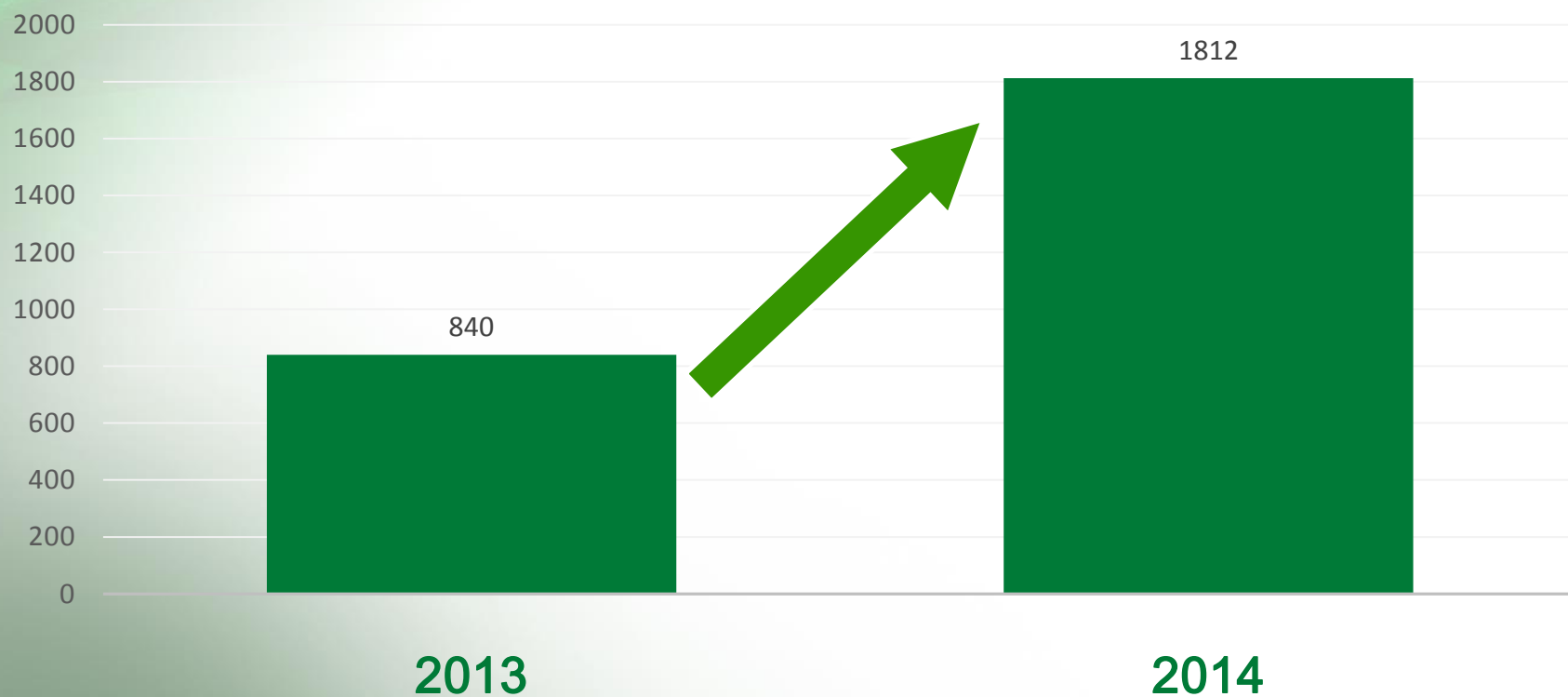


Length (cm): 252.59
Surface Area (cm²): 63.49

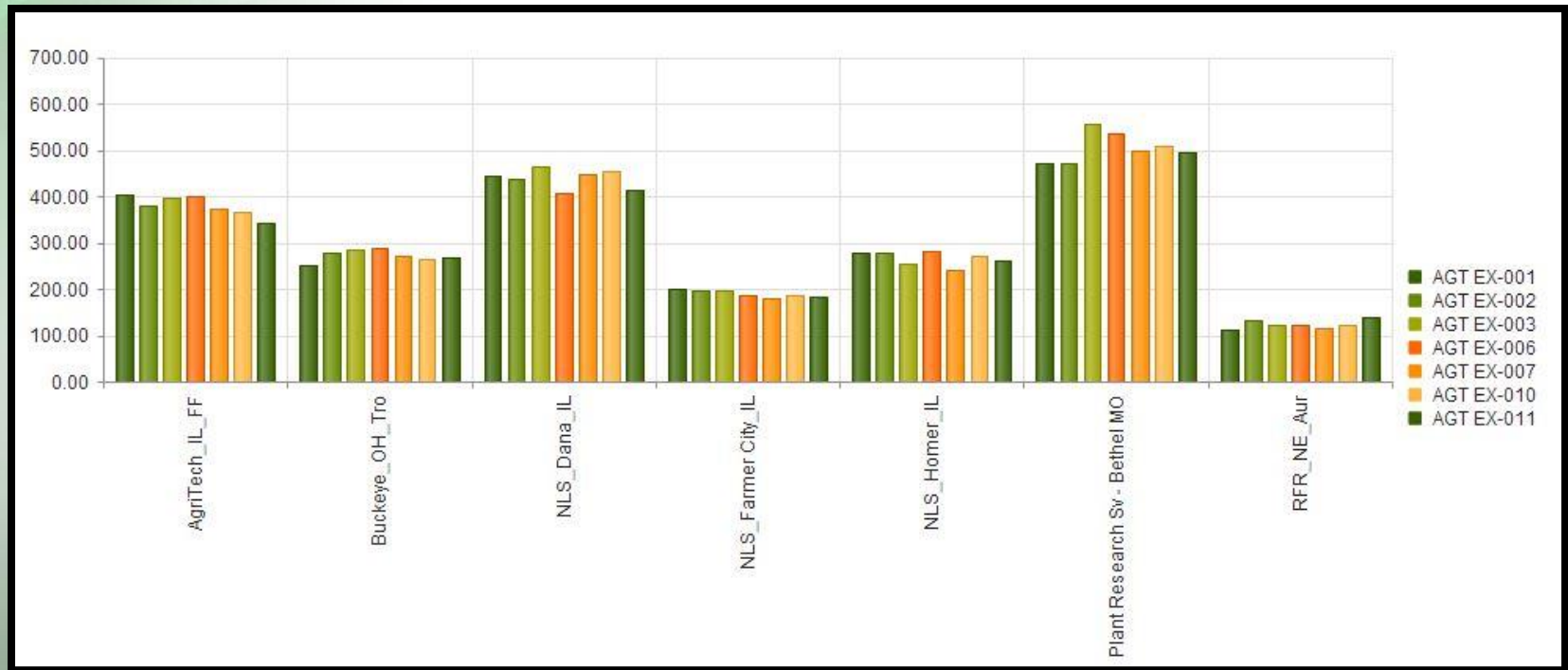
Location: Greene IA, Plant date: 05/23/2013, Sampled date: 06/19/2013, Sample stage: V3

2014 vs 2015

Plot numbers



Provide Data Package to Our Clients



THANK YOU



AGRITHORITY®
Science without Borders