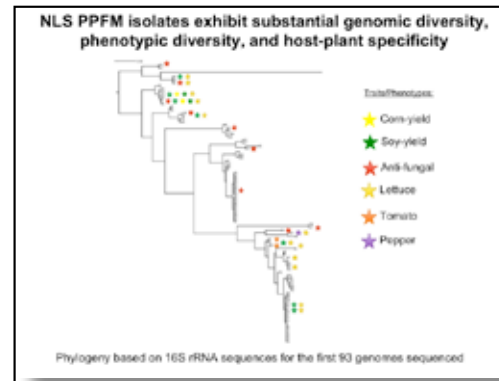
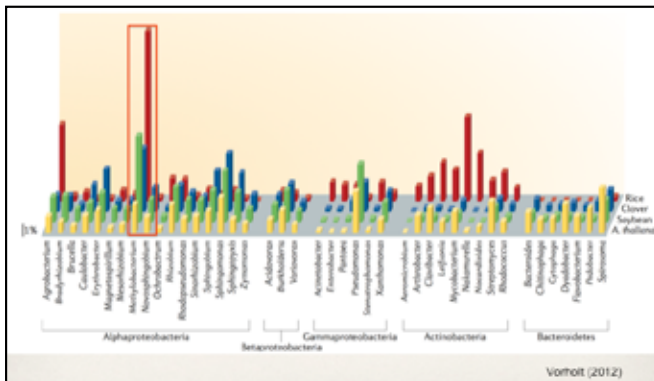
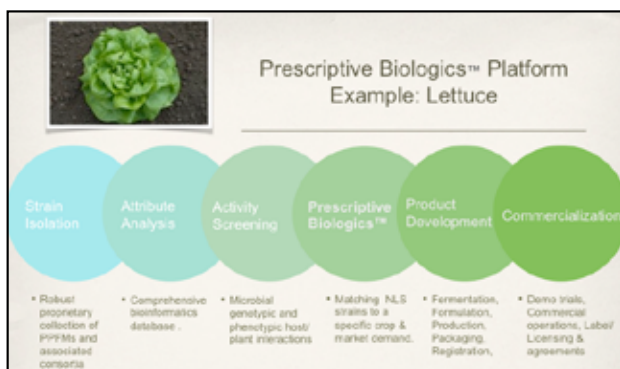




- **Located at the BRDG Park** incubator facility of the Donald Danforth Plant Science Center, in St. Louis, Missouri, NewLeaf Symbiotics (NLS) is a venture-backed agricultural biotech company focused on providing biologically-based plant health products. www.pangaaventures.com
- **Proprietary technologies optimize plant microbial populations** by delivering one of the most abundant genus of plant bacteria, Pink Pigmented Facultative Methyotrophs (PPFMS), and their consortia, to seeds, soil, and leaves.



- **PPFMS show the potential** for enhancing crop efficiency, improving nutrient utilization, and providing microbial germplasm that is complementary to many commercial inputs — chemical, biological and plant trait-driven.
- **NLS' Prescriptive Biologics™ platform** leverages the company's extensive collection of plant-associated bacteria and applies a deep understanding of genomics to develop effective and environmentally responsible products. www.stltoday.com



Regulatory Approval Status, and Initial Go To Market Strategy

- Jan 2013: EPA granted NewLeaf regulatory exemption for use of PPFMs on seed/soil and certain hydroponic uses.
- Full waiver from USDA and the FDA.
- 2015 application for organic certification anticipated in high value vegetable crops.
- Anticipating US EPA submission for foliar use with specific antifungal claims in 2015/16.

- **NLS' platform is designed to develop products** that improve plant health, increase crop yields, and manage important crop pests. NLS products reduce risk through life cycle management that preserve traits, chemistries and practices, by integrating biological inputs compatible with the agro-ecosystem into the global environment. www.newleafsym.com